



Model HSSLNGRFBKIT

Installation Instructions for the Slimline Antenna

Note: Attachment of this heater to the BACK of the antenna will likely require the services of a professional satellite installer.

1 SAFETY FIRST!

BE CAREFUL working on your satellite antenna. WATCH FOR POWER LINES. Caution is the first rule as tools, ladders and even the dish can conduct electricity if they come in contact with power lines, this can be FATAL. A fall from the roof or off of a ladder can be just as dangerous, therefore; you MUST be aware of dangerous conditions like wind, wet surfaces, snow and ice. If you are not competent or comfortable working with tools at the heights necessary to reach your dish, refer this installation to a professional installer.

-BE CAREFUL-

2 Installation Temperature Considerations

For your HotShot® heating element to develop maximum adhesion it is necessary for the antenna to be at a dry surface temperature of **AT LEAST 50° F (10° C)**.

A note on Roof Mounted antennas:

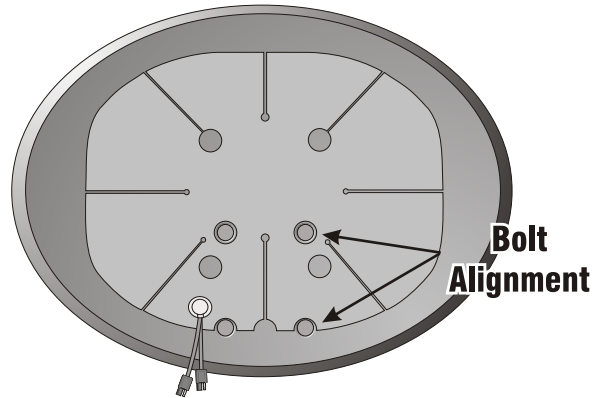
Do not attempt to climb ladders or walk on your roof if freezing or wet conditions exist. Wait until it is safe to work on your antenna. Outside temperature can affect adhesion only at the time of initial installation and is no factor thereafter.

3 Your Antenna Should Look Like This



This HotShot was designed primarily for the SlimLine antenna but can be used on other dishes of a similar size. The pre-cut holes in the heater blanket allow for attachment to the back of the metal SlimLine reflector. However, if you have a similar looking plastic reflector, or if you are not comfortable removing the reflector from an operating SlimLine antenna (read the precaution in Step #5), the HotShot can be attached to the face of the antenna.

4 Visual Orientation of the HotShot®



If you intend to attach the heater to the back of your antenna, the pre-cut holes must align properly. Visually check the bolt alignment of your antenna to confirm the fit. If your mount bolts do NOT align with the pre-cut holes, attach the HotShot to the face of your reflector.

5 A Note About Reflector Removal



The SlimLine antenna is extremely sensitive and the satellite alignment procedure is very specific. For this reason, if you prefer that the HotShot be attached to the BACK of the antenna, we suggest you enlist the aid of a professional installer who can realign the antenna after they remove and reinstall the reflector. - The heater **can** be attached to the face of the antenna but you must be careful during the cleaning and attachment to avoid moving or realigning the antenna.

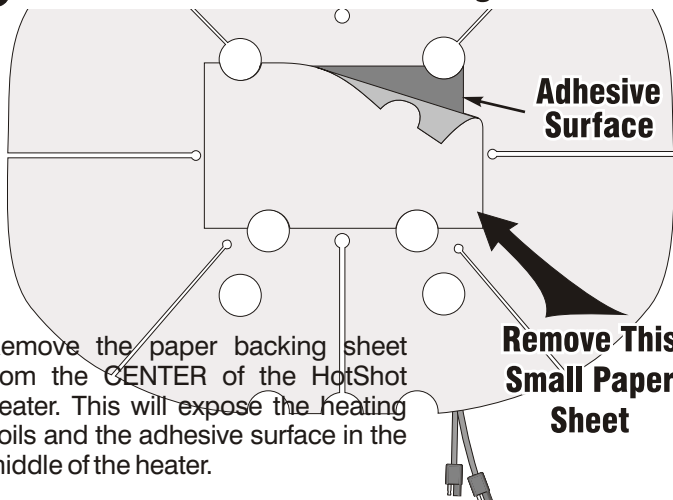
6 Clean the Attachment Area



Clean the proposed attachment area the antenna with any household de-greaser like "409" brand or "Fantastic". Make sure the surface is clean of all dirt or oil. Allow the surface to dry thoroughly.

Do not touch the cleaned surface with your hands.

7 Remove The Center Backing Sheet First

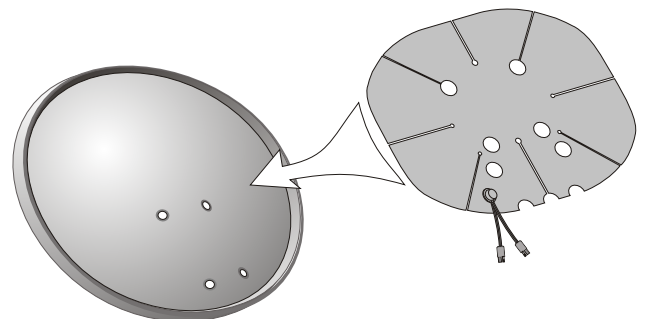


Remove the paper backing sheet from the CENTER of the HotShot heater. This will expose the heating coils and the adhesive surface in the middle of the heater.

Remove This Small Paper Sheet

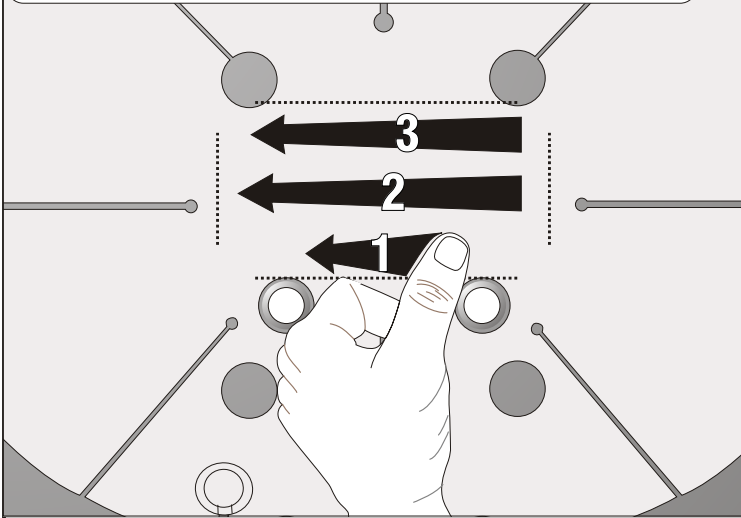
Do Not remove any other protective sheets until you have aligned and attached the heater to your dish.

8 Position the HotShot



Place the HotShot on the attachment area surface of your dish and lightly press the exposed center adhesive down onto the reflector. Go to step #9 for the completion of the attachment procedure.

9 Press Down The Center of the HotShot

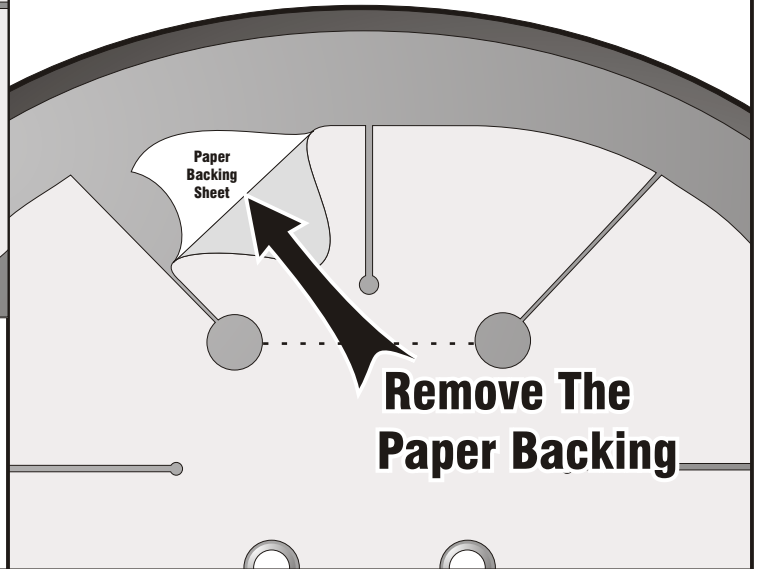


When the HotShot is in the proper position press the exposed adhesive surface down onto your dish.

Smooth and remove air bubbles by pressing as shown. TAKE YOUR TIME with this procedure. Do not remove any other paper sheets until this center section is pressed into place.

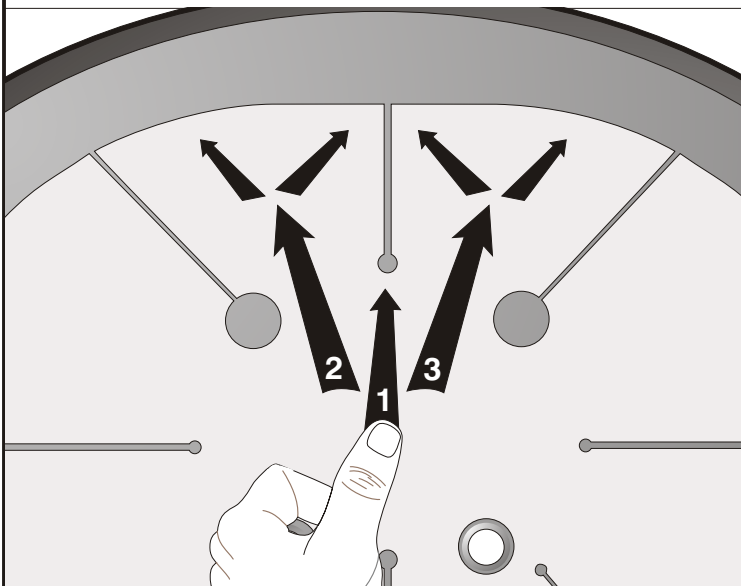
10 Remove The Paper Backing From ONE area

Remove the protective paper sheet from the back of ONE entire heater quadrant exposing the adhesive. Hold the heater blanket up off the dish and continue on to Step #11.

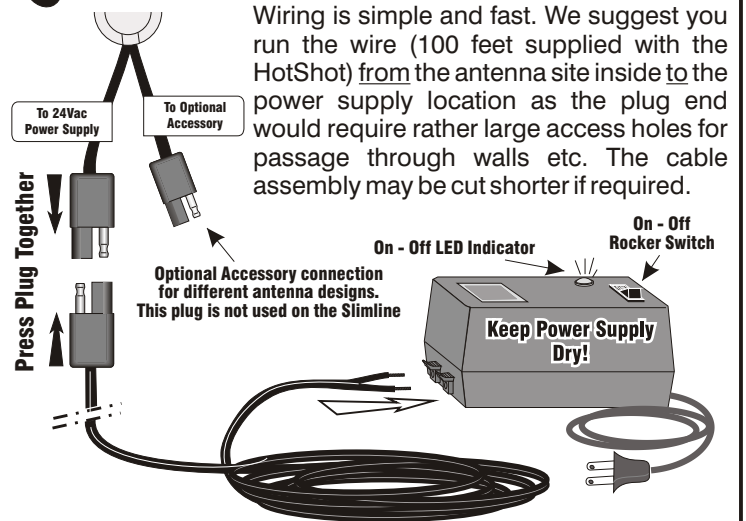


11 Press The Quadrant Onto The Dish

Smoothly press the quadrant into position and remove air pockets by following the pattern shown below. Press the center down and then radiate outward to the edges. Attach all three remaining quadrants down onto the dish surface in the same fashion.



12 Wiring Hook-up



Wiring is simple and fast. We suggest you run the wire (100 feet supplied with the HotShot) from the antenna site inside to the power supply location as the plug end would require rather large access holes for passage through walls etc. The cable assembly may be cut shorter if required.

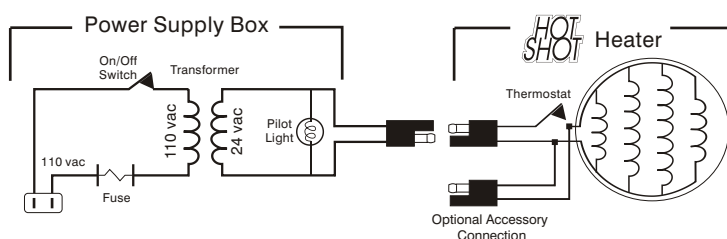
Connect the HotShot power supply plug to the plug marked "To 24 Vac Power Supply". Connect the opposite end of the wire bundle (two exposed wire ends) to the power supply.

Polarity is not important as the power supplied to the HotShot is alternating current and has no "positive" or "negative" side.

How The HotShot Works

The HotShot has a thermostat inside the cylindrical housing on the face of the heating element. When the temperature outside approaches freezing, the thermostat activates the heater. As the temperature of your antenna warms above freezing the thermostat detects the change and turns the heater off.

Since the SnowGuard is very efficient and operates on just pennies a day, we recommend that the power supply be turned on and left on through the winter season. Your SnowGuard will only consume electricity when snow conditions exist.



Warranty

PERFECT 10, INC. warrants this product to be free from defects in materials and workmanship under normal use and service. If our examination reveals to our satisfaction that the part in question is defective, we agree to repair or replace it after the unit is returned to us, prepaid, with proof of purchase. This warranty does not cover any costs associated with the removal or replacement of the part(s) in question, the labor to package parts for shipment or the freight charges incurred to and from the factory. Paint finish or appearance is not covered by this warranty.

The HotShot electrical components consisting of the heating element, thermostat and power supply have a **one year** repair or replacement warranty. Removal labor or reinstallation labor is not included.

This warranty shall not apply to any product which has been repaired or altered in any way so as, in our judgement, to affect its structural integrity or durability; nor shall it cover any damage due to misuse, negligence, improper installation, or failure of any supporting structure not supplied by this manufacturer. This limited warranty does not cover products which have been impaired or damaged due to severe weather conditions such as, but not limited to, excessive wind, ice, storms, lightning, or any other natural occurrences over which PERFECT 10, Inc. has no control.

This warranty is in lieu of all other guarantees expressed or implied. We neither assume nor authorize any representative or any person(s) to assume any other liability or assurance in connection with our product. Non-compliance with any part of this claim procedure or improper registration of the product with PERFECT 10, Inc. at the time of its original installation may invalidate this warranty in whole or in part.